

ITS TRAIL MAP
2008-2009 Season **FREE**

This map is provided for snowmobilers through the joint effort of the Maine Snowmobile Association and the Maine Department of Conservation.

Maine Snowmobile Association
PO Box 89, Augusta, ME 04332
207-622-6983 • msa@mesnow.com
Trail Conditions: www.mesnow.com

Maine Department of Conservation
Bureau of Parks and Lands-Snowmobile Program
State House Station #22, Augusta, ME 04333
207-287-4957 • charmond.martin@maine.gov
www.maine.gov/dcof

RIDE RIGHT in Maine

Map of Maine's Statewide Interconnected Snowmobile Trail System (ITS)

Support the Office of Landowner Relations and Protect Recreational Access in Maine

SUPERSPORT
Your Superior Registration
www.maine.gov/lfw

FUN ON THE TRAILS, NOT ON THE RAILS
RAILROAD TRESPASSING IS DANGEROUS AND ILLEGAL
Maine Operation Lifesaver
www.oli.org

Snowmobilers Support Sound Forestry Practices
Maine's Sustainable Forestry Initiative
1-888-SFI-GOAL
(1-888-734-4635)

Help Us Stop Maine's Fish & Wildlife LAW VIOLATORS
Call Operation Game Thief
1-800-253-7887

Expect Grooming Equipment On The Trail Anywhere, 24 Hours A Day
Due to weather conditions, traffic patterns or volunteer scheduling. Equipment may take the full width of the trail.

For Emergency Assistance:
To reach a Maine Warden 24 hours a day, contact a Regional Communication Center:
AUGUSTA 1-800-452-4684
GRAY 1-800-482-0730
HOULTON 1-800-924-2861
ORONO 1-800-432-7381

Regional Warden Service Headquarters
ASHLAND 207-435-3231
BANGOR 207-941-4440
GRAY 207-657-2345
GREENVILLE 207-695-3756
SIDNEY 207-547-5300

The Trails:
The snowmobile trails depicted on this map are created through the efforts of the members of the clubs of the Maine Snowmobile Association (MSA), the Snowmobile Division of the Bureau of Parks & Lands-Maine Department of Conservation, participating municipalities and many generous landowners across the state who allow snowmobile trails on their property.
To create and maintain these winter trails, Maine snowmobile clubs, chambers of commerce, municipalities and businesses have provided thousands of volunteer hours, a considerable amount of their own funds and trail grooming equipment to supplement the moneys provided to the trail system by snowmobile registration fees and some gas tax revenue.
These primary trails and many others have been developed to provide the snowmobilers of Maine and those who visit our state with safe, enjoyable snowmobiling on over 13,500 miles of groomed winter trails. All who enjoy snowmobiling in Maine are encouraged to join a club and the MSA to help keep the trails open. To contact an MSA club in your town or riding area, see the list on the reverse of this map.

Sled Registration
Maine snowmobile registrations are available through the Division of Licensing and Registration, Department of Inland Fisheries and Wildlife (IF&W), 41 State House Station, Augusta, Maine 04333-0041 207-287-2043 and at over 200 agents across the state. There are also some agents in New Hampshire and Vermont. The list is posted on the IF&W web site: www.maine.gov/lfw. You may also purchase registration renewals and non resident season registrations on-line on the same web site. Resident registration is \$35 per season (7/1-6/30). Non-resident registration is \$88 for a full season; \$58 for ten consecutive days or \$43 for 3 consecutive days. (There is also an agent fee of \$1-\$2). Registration funds are used by the Snowmobile Division, Bureau of Parks and Lands to allocate grants to clubs, towns etc. to partially reimburse them for the development and maintenance of trails and the purchase of grooming equipment; a portion is used to support snowmobile enforcement and other activities of the Maine Warden Service. For \$20 you can support the activities of the Landowner Relations program at IF&W, dedicated to insuring recreational access to private lands. Ask for a "Supersport" upgrade when you register your sled. For more information, visit www.maine.gov/lfw.

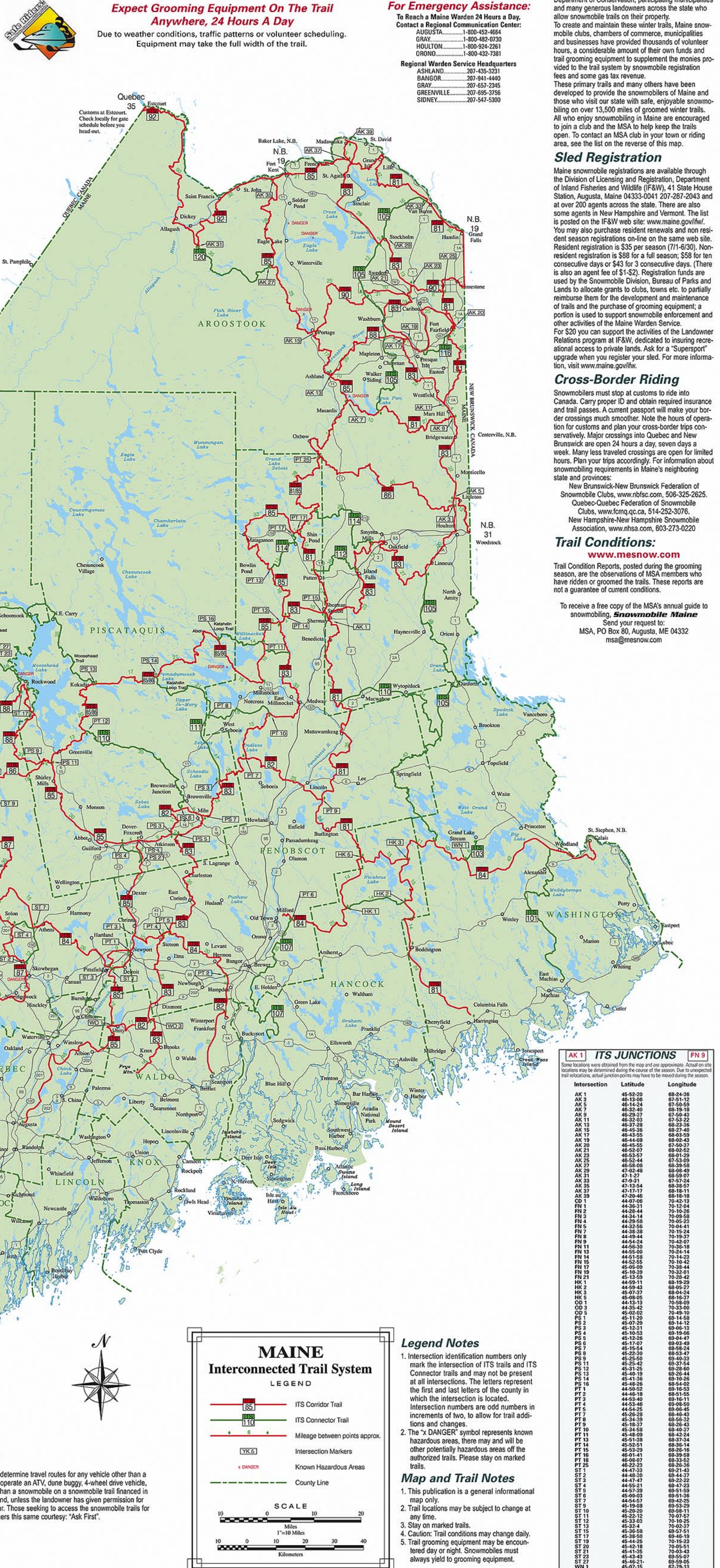
Cross-Border Riding
Snowmobilers must stop at customs to ride into Canada. Carry proper ID and obtain required insurance and trail passes. A current passport will make your border crossings much smoother. Note the hours of operation for customs and plan your cross-border trips conservatively. Major crossings into Quebec and New Brunswick are open 24 hours a day, seven days a week. Many less traveled crossings are open for limited hours. Plan your trips accordingly. For information about snowmobiling requirements in Maine's neighboring state and provinces:
New Brunswick-New Brunswick Federation of Snowmobile Clubs, www.nbfsc.com, 506-325-2625.
Quebec-Quebec Federation of Snowmobile Clubs, www.fcmq.qc.ca, 514-252-3076.
New Hampshire-New Hampshire Snowmobile Association, www.nhsa.com, 603-273-0220

Trail Conditions:
www.mesnow.com
Trail Condition Reports, posted during the grooming season, are the observations of MSA members who have ridden or groomed the trails. These reports are not a guarantee of current conditions.
To receive a free copy of the MSA's annual guide to snowmobiling, **Snowmobile Maine** Send your request to:
MSA, PO Box 80, Augusta, ME 04332
msa@mesnow.com

Respect Maine Landowners
Over 95% of Maine's snowmobile trails are located on private land. Whenever you ride on a snowmobile trail, you are most likely the guest of a private landowner who has chosen to provide access. Please thank them by staying on the marked trail, observing all snowmobile laws and carrying out any and all litter.

- Ride Responsibly**
- Never drink alcohol and operate a snowmobile.
 - Always operate at a reasonable speed for current trail conditions. Trail enforcement details occasionally mark the trail on a curve or rise to divide the lanes and identify snowmobilers who are operating recklessly or driving to endanger. If you travel on the wrong side of the trail you may be charged with an offense.
 - Stay on the right side of the trail and park to the right in single file or stop off the edge of the groomed surface.
 - Always yield to trail grooming equipment. This equipment may be encountered on any trail at any time of day or night.
 - Do not pass another sled unless recognized and motioned to pass by the snowmobile operator ahead of you.
 - Respect the trail crews and leave the trail in good condition.
 - Never ride on plowed roads except at legal crossings.
 - Carry in, carry out ALL trash, including cigarette butts.
 - Respect the landowner's property, stay on the trail and do no damage to trees, shrubs or other natural features.
 - Know and obey Maine snowmobile law.

PLEASE STAY ON MARKED TRAIL



AK 1 ITS JUNCTIONS FN 9

Some locations were obtained from the map and are approximate. Actual on-site locations may be determined during the grooming season. Due to unexpected trail relocations, actual junction points may have to be moved during the season.

Intersection	Latitude	Longitude
AK 1	45-52-20	68-24-36
AK 3	46-13-06	67-51-12
AK 5	46-14-24	67-50-58
AK 7	46-32-40	68-18-18
AK 9	46-29-27	67-59-27
AK 11	46-32-03	67-53-22
AK 13	46-37-28	68-23-36
AK 15	46-45-38	68-27-40
AK 17	46-43-25	68-03-59
AK 19	47-19-27	68-05-07
AK 20	46-45-55	67-59-37
AK 21	46-52-07	68-01-29
AK 22	46-53-57	67-53-09
AK 25	46-52-44	68-22-22
AK 27	47-02-48	68-08-49
AK 29	47-02-48	68-08-49
AK 31	47-12-17	68-27-24
AK 33	47-12-17	68-18-11
AK 35	47-12-17	68-18-11
AK 37	47-12-17	68-18-11
AK 39	47-20-46	68-18-11
CD 1	44-07-06	70-12-04
FN 1	44-36-31	70-12-04
FN 2	44-36-44	70-12-26
FN 3	44-34-14	70-09-58
FN 4	44-29-58	70-09-23
FN 5	44-32-56	70-04-41
FN 7	44-38-38	70-15-24
FN 8	44-39-44	70-07-57
FN 9	44-54-24	70-45-07
FN 11	44-56-50	70-09-18
FN 13	44-55-00	70-24-14
FN 14	44-51-58	70-14-29
FN 15	44-52-55	70-10-42
FN 17	45-05-09	70-38-44
FN 19	45-16-39	70-32-01
FN 21	45-13-59	70-28-42
FN 22	45-13-59	70-28-42
HK 1	44-59-43	68-05-27
HK 2	44-59-43	68-05-27
HK 3	44-59-43	68-05-27
HK 5	45-08-05	68-16-37
OD 1	44-13-13	70-58-09
OD 2	44-07-06	70-33-00
OD 5	45-02-02	70-49-10
PS 1	45-29-59	69-43-29
PS 2	45-07-29	68-14-12
PS 4	45-10-53	69-19-06
PS 5	45-12-26	69-04-47
PS 6	45-12-07	69-03-49
PS 7	45-15-54	68-58-24
PS 8	45-12-36	68-59-25
PS 9	45-25-50	68-40-32
PS 10	45-21-25	68-37-54
PS 12	45-21-25	68-40-40
PS 13	45-40-19	68-26-44
PS 14	45-16-39	68-46-43
PS 16	45-48-28	68-54-02
PS 17	44-59-52	68-25-51
PT 2	44-46-18	68-51-55
PT 4	44-53-46	68-50-50
PT 5	44-54-25	68-06-45
PT 6	44-56-50	68-40-32
PT 8	45-34-39	68-56-32
PT 9	45-18-37	68-29-51
PT 10	45-34-58	68-40-37
PT 11	45-48-29	68-32-24
PT 13	45-52-51	68-36-14
PT 14	45-52-51	68-36-14
PT 15	46-01-41	68-39-58
PT 16	46-01-41	68-39-58
PT 17	46-01-41	68-39-58
PT 25	46-22-23	68-28-36
ST 2	44-47-33	68-21-43
ST 3	44-47-33	68-21-43
ST 4	44-47-33	68-21-43
ST 5	44-47-33	68-21-43
ST 6	44-47-33	68-21-43
ST 7	44-54-57	69-42-25
ST 8	44-54-57	69-42-25
ST 9	44-54-57	69-42-25
ST 10	44-54-57	69-42-25
ST 11	44-54-57	69-42-25
ST 12	44-54-57	69-42-25
ST 13	44-54-57	69-42-25
ST 14	44-54-57	69-42-25
ST 15	44-54-57	69-42-25
ST 16	44-54-57	69-42-25
ST 17	44-54-57	69-42-25
ST 18	44-54-57	69-42-25
ST 19	44-54-57	69-42-25
ST 20	44-54-57	69-42-25
ST 21	44-54-57	69-42-25
ST 22	44-54-57	69-42-25
ST 23	44-54-57	69-42-25
ST 24	44-54-57	69-42-25
ST 25	44-54-57	69-42-25
WO 1	44-37-01	69-21-45
WO 3	44-38-02	69-11-52

Trail & Map Usage
This snowmobile map should not be used to determine travel routes for any vehicle other than a snowmobile. It is against the law in Maine to operate an ATV, dune buggy, 4-wheel drive vehicle, motorcycle or any other motor vehicle other than a snowmobile on a snowmobile trail financed in part with funds from the Snowmobile Trail Fund, unless the landowner has given permission for the activity. This is true at any time of the year. Those seeking to access the snowmobile trails for non-motorized activities should offer landowners this same courtesy: "Ask First".